

## HOW TO MAINTAIN YOUR NITROGEN TIRE PRESSURE

(Green valve stem caps are the world standard indicating nitrogen filled tires.)

Use a digital tire pressure gauge. Conventional tire gauges must fill the cylinder to get the tire pressure reading. This will remove about 1 to 2 p.s.i. every time you use the tire gauge. Digital tire pressure gauges get the reading directly from the tire valve core, losing no tire pressure. Digital gauges are held directly onto the valve stem until the reading shows. It is easier to get an accurate reading from a digital tire gauge versus the old analog style.

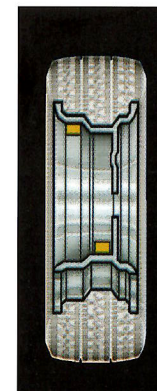
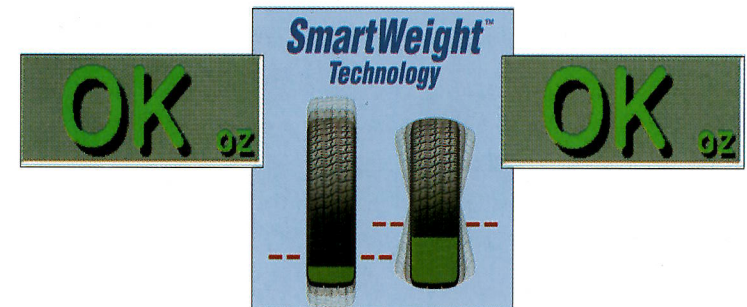
1. Nothing has changed. You add air to your tires just as before.
2. Air is made up of 78% nitrogen, 21% oxygen, 1% other gasses.
3. Our on-board nitrogen generator removes the oxygen and moisture from air, inflating your tires with about 97% nitrogen or better. Adding air will not affect the nitrogen concentration.
4. Your tires will maintain their pressure longer. A normal tire loses about 3 p.s.i. per month. Using nitrogen it will lose only about 1/2 p.s.i. per month helping to properly maintain the tires pressure longer and helping you to possibly realize quicker that you have a flat due to changed handling of your car.
5. Nitrogen is a very safe and stable gas. It will maintain tire pressure in hot and cold climate and at sea level or high altitudes. This means no more fluctuating tire pressure when traveling or in summer and winter.
6. Most customers have noticed a 1 mile per gallon increase in their cars fuel economy.
7. You may notice your car has a smoother ride. This is because nitrogen is a denser molecule making the tire more round. The tire doesn't squat as much making the car ride the way it should and improve the cars handling, reducing tire squirm.
8. The only time you will need to refill with nitrogen is if you get a flat. Refilling with air is perfectly fine and safe until you can get nitrogen refilled at your convenience. Now go out and enjoy that new car ride!



These Wheels Have Been Balanced Using

# SmartWeight™ Technology

These wheels have been balanced using HUNTER SmartWeight balancing technology. This is a new method of balancing that reduces correction weight and also performs a superior overall balancing service.



**IMPORTANT:** If the wheel balance is checked on a conventional wheel balancer, the measurements will differ. SmartWeight provides a better quality dynamic balance by fine tuning static force, yet also ignores the unnecessary portion of couple correction weight which is below the threshold for a vehicle to vibrate. The remaining residual couple correction weight will be located in two positions, opposite each other and nearly equal in size. For more information, go to [www.weightsaver.com](http://www.weightsaver.com).

**HUNTER**  
Engineering Company